

trent munson.
iza el nems.

marina abramovic. a visual presentation

genesis
a visual perspective
scene composition
styling
conclusion

genesis
a visual perspective
scene composition
styling
conclusion

editorial reinterpets marina abramovic’s legacy through a series of video stills and single-take vignettes.

video vignettes work to better capture the world of performance art, capturing endurance + ritual. purpose is to honor her process while creating a fresh, visual interpretation.

each piece explores themes of freedom vs. restraint, destruction vs. rebirth, and spiritual transfiguration, balancing the tension between physical presence and the spiritual void.

visuals in natural light include open solitary fields, a shattering mirror, reflections in water, all evoking abramovic’s signature use of ritual and endurance to confront existential boundaries.

iconic motifs like lambs, horses, dunce cap, + chair drawing recreated as sculpture are incorporated.

editorial blends her iconic motifs with new perspectives, celebrating ethos of pushing boundaries of art and humanity.

grounding in minimalism + raw energy.

marina abramovic. a visual presentation

genesis
a visual perspective
scene composition
styling
conclusion

cinematography is essential. framing carefully considered to evoke a video-like quality, with each photo feeling like a freeze-frame from a film. These images will suggest a moment captured mid-narrative, leaving the viewer to imagine the story that surrounds it—what came before, and what might come after. To heighten this sense, we'll focus on horizontal compositions that mimic the widescreen aspect of cinema, allowing for a storytelling atmosphere within each frame.

movement plays a vital role: each pose contains a hint of motion, giving the impression of a fleeting + dynamic moment. marina appears as though she's caught in action, suspended in time. blending of elements—horizontal framing, narrative suggestion + subtle motion—aims to create an immersive visual story. invites viewers to step inside and imagine the series unfolding.

marina abramovic. a visual presentation

genesis
a visual perspective
scene composition
styling
conclusion



expanded perspective and imposing structures

genesis
a visual perspective
scene composition (01)
styling
conclusion



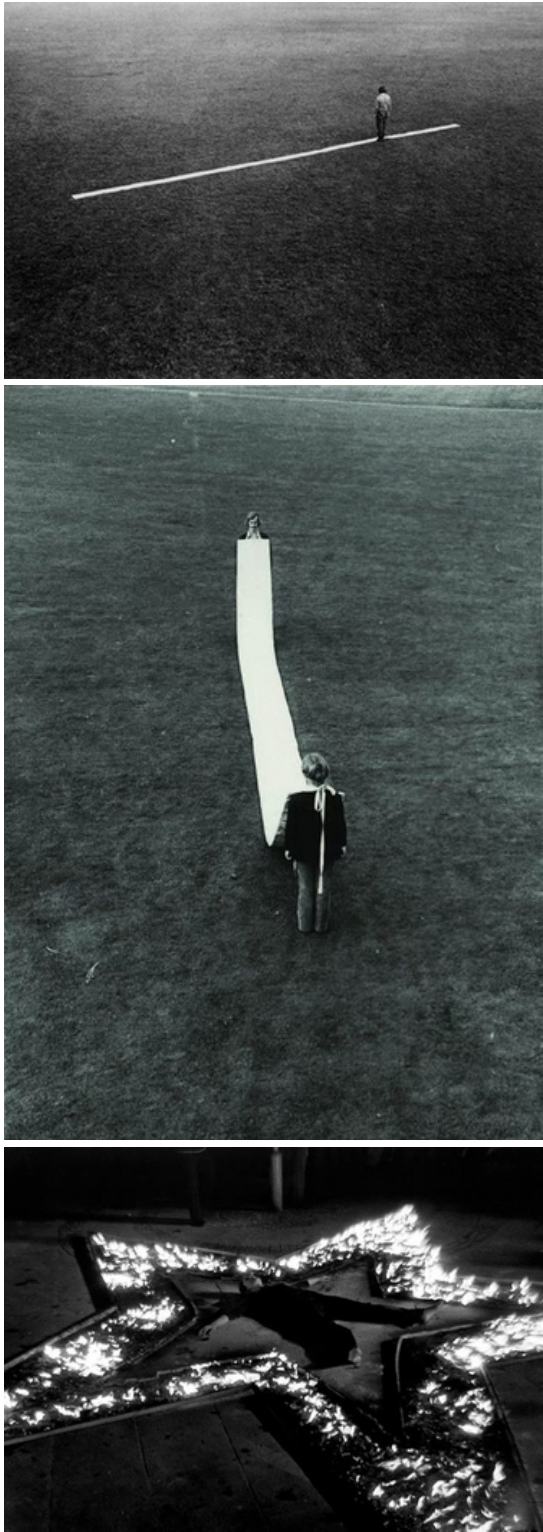
the land.
using the natural land as a canvas, grounding symbolic acts within the raw elements of earth and fire. utilizing open fields, circular formations, and geometric patterns etched into natural landscapes channels
these themes of endurance and spiritual transfiguration.

genesis
a visual perspective
scene composition (01)
styling
conclusion



the land as ritualistic space that symbolizes life, death, and rebirth.

genesis
a visual perspective
scene composition (01)
styling
conclusion



the land acts as a stage for ritual and physical engagement, reinforcing abramović’s connection to primal forces and her exploration of the body as both vessel and medium.

the land.

genesis
a visual perspective
scene composition (02)
styling
conclusion

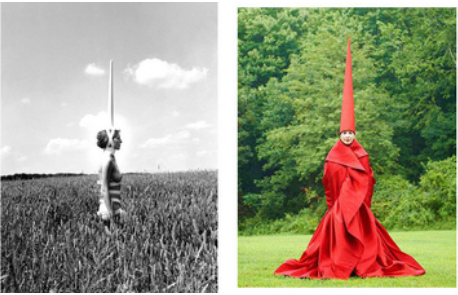


tying nature's cycles of bloom and decay to marina abramović's themes of life, death, and rebirth.



open fields.

genesis
a visual perspective
scene composition (02)
styling
conclusion



flowers scattered in geometric patterns on the ground, interwoven with Marina's movements.

open fields.

genesis
a visual perspective
scene composition (02)
styling
conclusion



open fields.



open fields.

genesis
a visual perspective
scene composition (03)
styling
conclusion



reflections.
super slow motion walking towards marina in center. layered perspectives incorporate foreground elements that draw the viewer’s eye through the frame and add a sense of dimension. each video still is transformed into a tableau that balances visual storytelling with performance art.

genesis
a visual perspective
scene composition (04)
styling
conclusion



the mirror and the lamb.
slow dolly out, capturing marina in super slow motion as she walks across the frame holding a lamb. frame shifts focus in post, pushing toward a pile of broken glass. the fractured shards come together, gradually revealing marina's reflection within the shattered mirror. concept symbolizes fragility, destruction, and rebirth. meant to be isually striking and rooted in abramovic's performance art legacy.

genesis
a visual perspective
scene composition (04)
styling
conclusion



the mirror and the lamb.

genesis
a visual perspective
scene composition
styling
conclusion



styling
embodies body extension sculptures—objects strapped to the figure to exaggerate the structure of the human form as it moves through space. custom pieces created for each scene—swan hat, re-created variations of marina’s chairs, etc.

genesis
a visual perspective
scene composition
styling
conclusion

thank you
trent munson
iza el nems

marina abramovic. a visual presentation